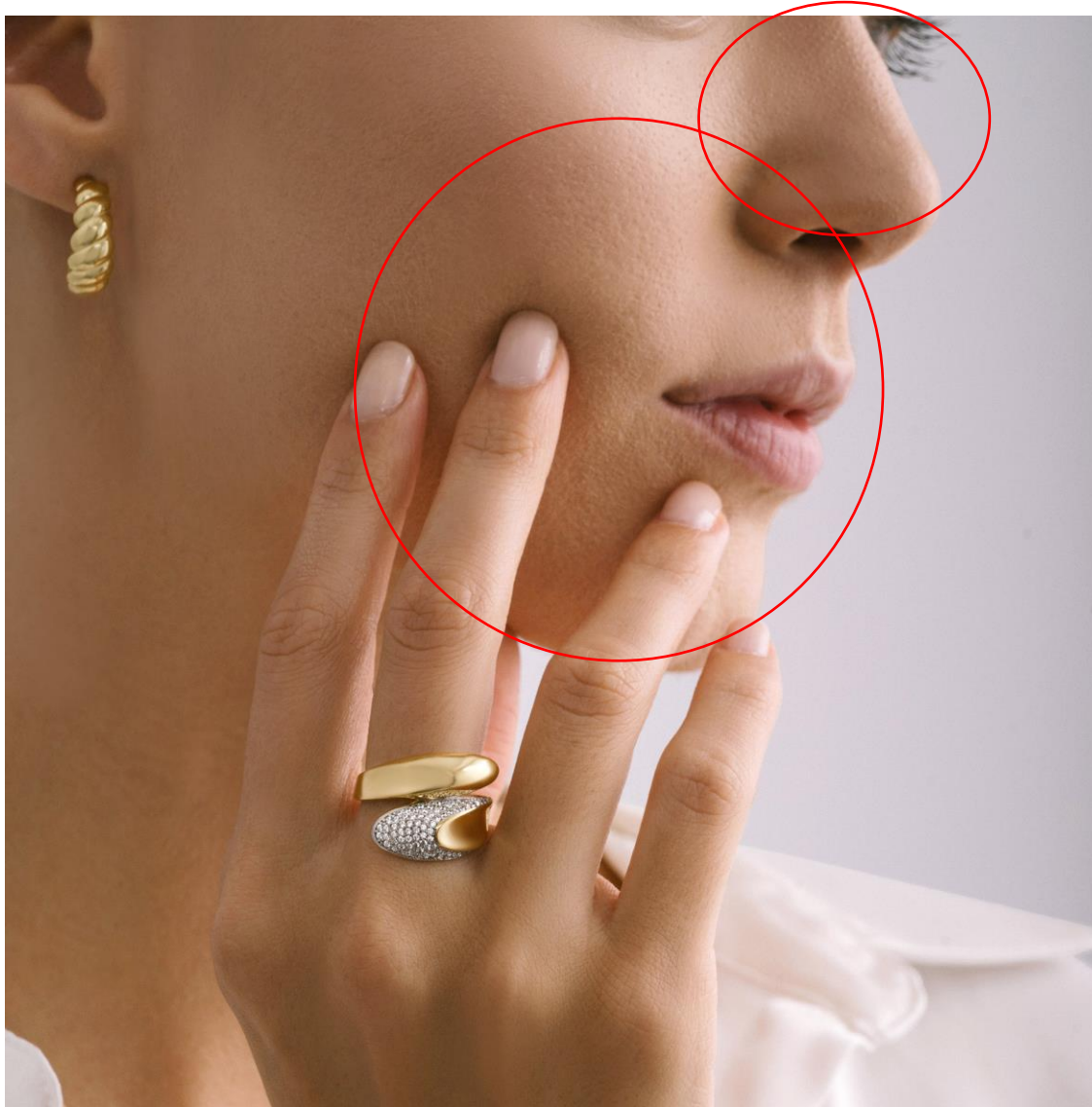


Bracelet is ok but model's face has still some defects. We marked with the red circle.



Earring and ring are ok but model's face has still some defects. We marked with the red circle.



OK





Please clear the dark spots that we marked on the photo



OK



OK





OK



OK

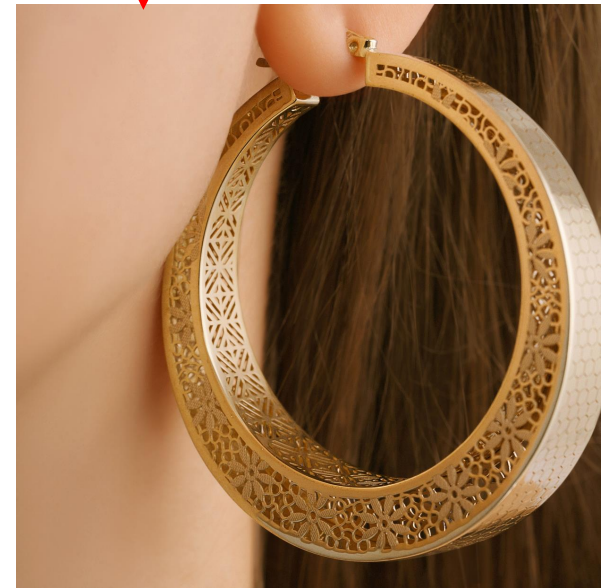




OK



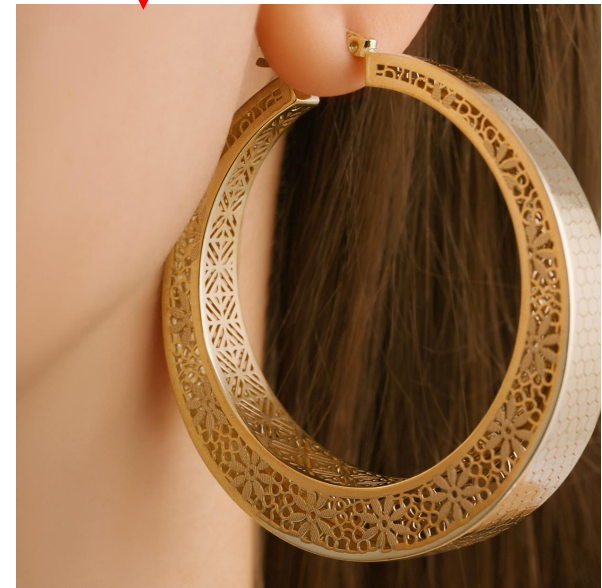
Model's face tone looks a little bit fake.( Too much orange) It should be like that tone







Model's face tone looks a little bit fake.( Too much orange) It should be like that tone. It should be same with the previous photo since both belong to the same product.







OK



OK



OK





Earring is ok, please retouch the marked area. We still some defects and tiny hairs



Emerald should be the same as shown below. Shinier and lighter green





OK





Earring is ok but model's face has still some defects. We marked with the red circle.



Earring is ok, please retouch the marked area. We still some defects and tiny hairs



OK





Jewels are ok but please retouch again model's whole face. Too much foundation and defects on some areas.



Photo is too shiny could you please  
reduce brightness a litte?



We see some hairs on model's face.





Diamonds must shine more