



we noticed that only one earring is shown, and the angle doesn't reflect the product accurately. Since this is a pair of earrings, we'd kindly ask for the visual to include **both earrings** and to be taken from a **straight, front-facing angle**, clearly showing the **top part of the design** as well.

This is important to maintain consistency with the rest of the product photos on our site. You can use the **pearl earring photo** as a reference for composition and framing.



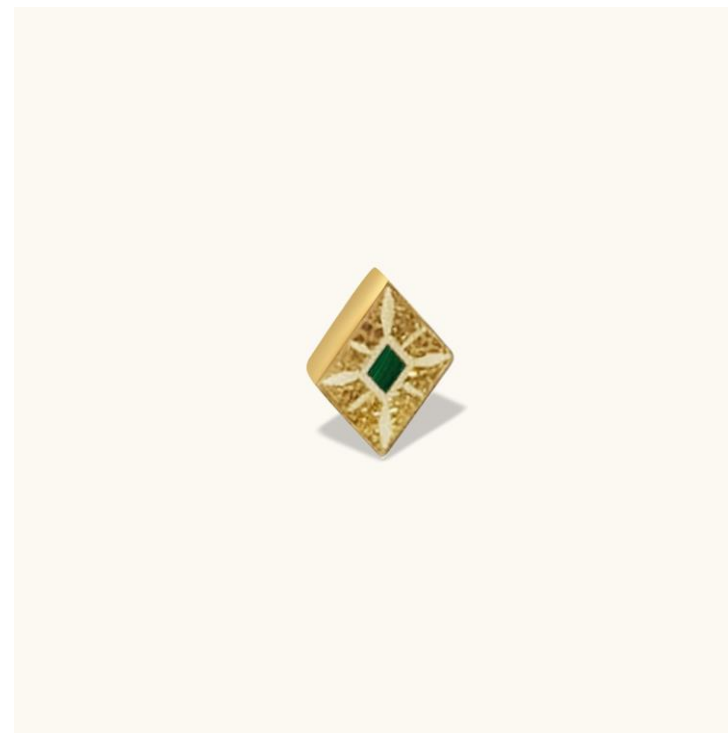
We'd also like to request a product photo layout that clearly shows **both the front and back sides** of the earrings.

In this shot, one earring should display the **front view**, while the second one shows the **back side** of the earring. This will help customers better understand the clasp mechanism and overall design.

You can use the **Triangular Pyramid Earrings** layout as a reference for styling and positioning.



For the third photo, we actually need a **ring** instead of the pendant.  
The **first image** should be taken from a **straight-on angle** showing the ring clearly from the front. (As seen on the right photo)  
If possible, the **second image** can show the ring from a slightly different angle to better highlight its form and details.



Please hold off on working with these two images for now — we'll be sending over higher-quality and more detailed visuals shortly.