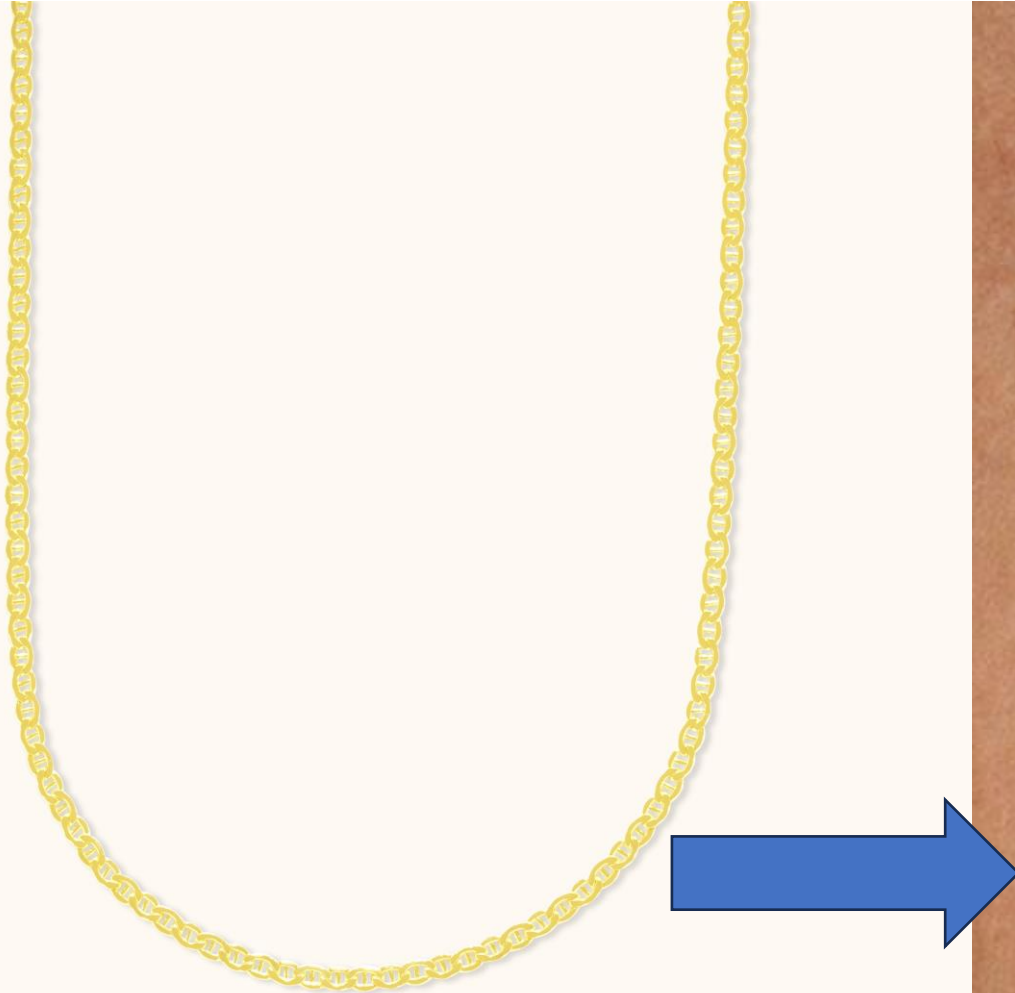


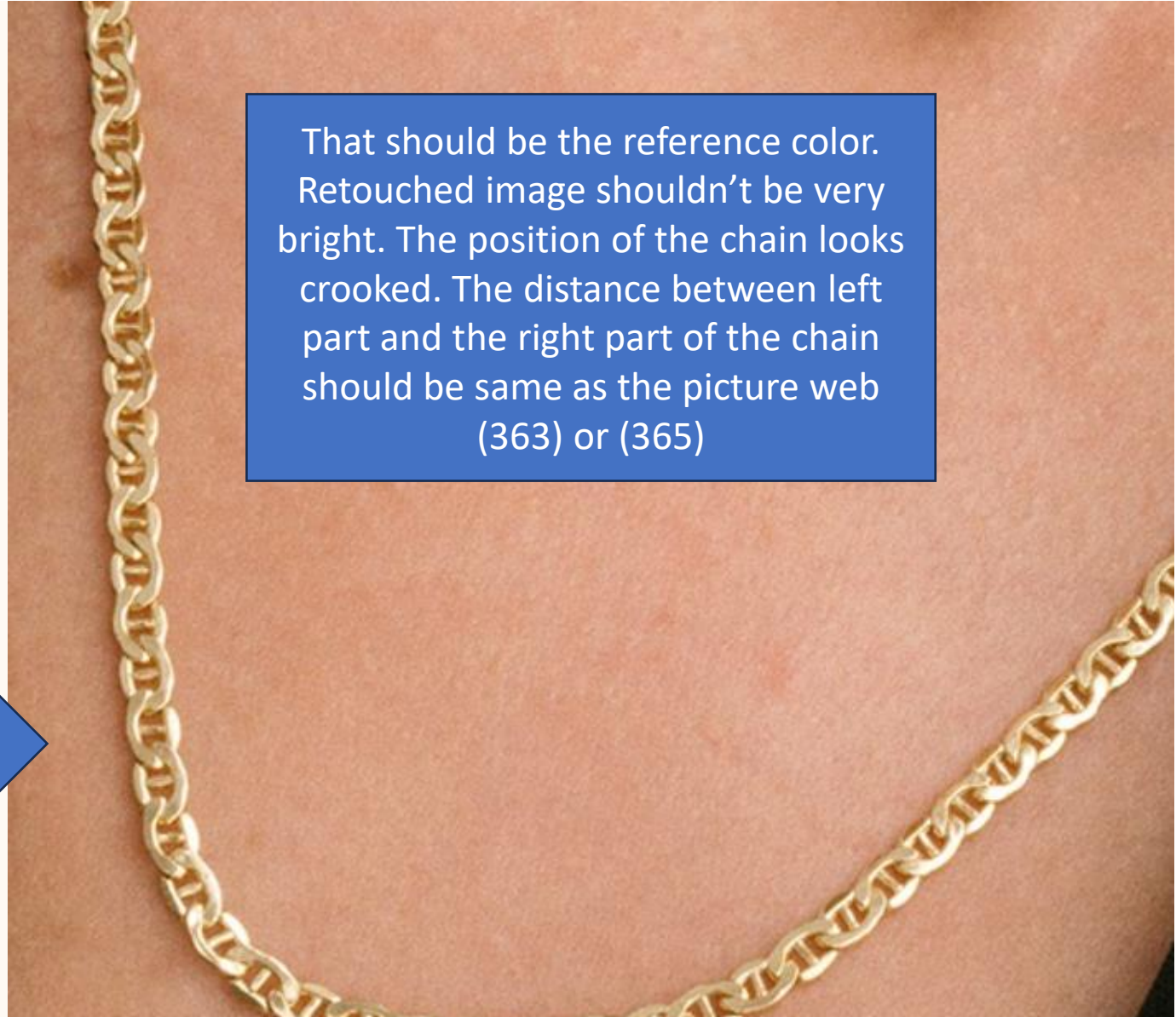
# General Notes

- All chains must be position at the same place. Please position them at the center and the distance to left and to right edge should be equal.
- Some chains don't seem straight. Please fix this problem

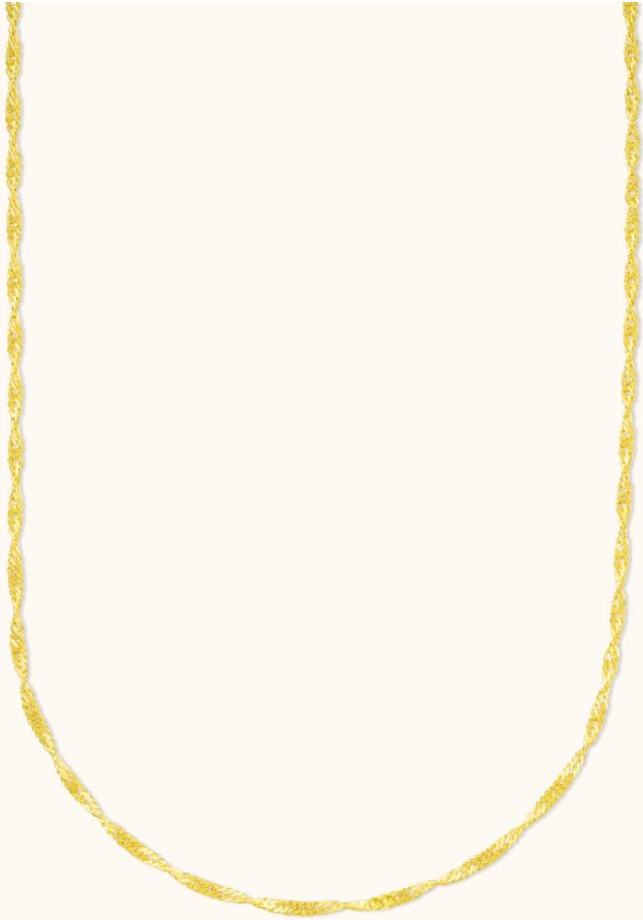
WEB (362)



That should be the reference color. Retouched image shouldn't be very bright. The position of the chain looks crooked. The distance between left part and the right part of the chain should be same as the picture web (363) or (365)



WEB (363)



Color is OK. Please position all the necklaces at the same place.

WEB (365)



Color is OK. Please position all the necklaces at the same place.

WEB (366)



Color is OK. But the proportion of the left and right part of the chain doesn't seem ok. Please fix it, I marked the parts in red circles. These parts does not seem straight and please position all the necklaces at the same place. At the bottom part, shadow of the chain seems very dominant.(I marked it blue) Please reduce the shadow

WEB (369)



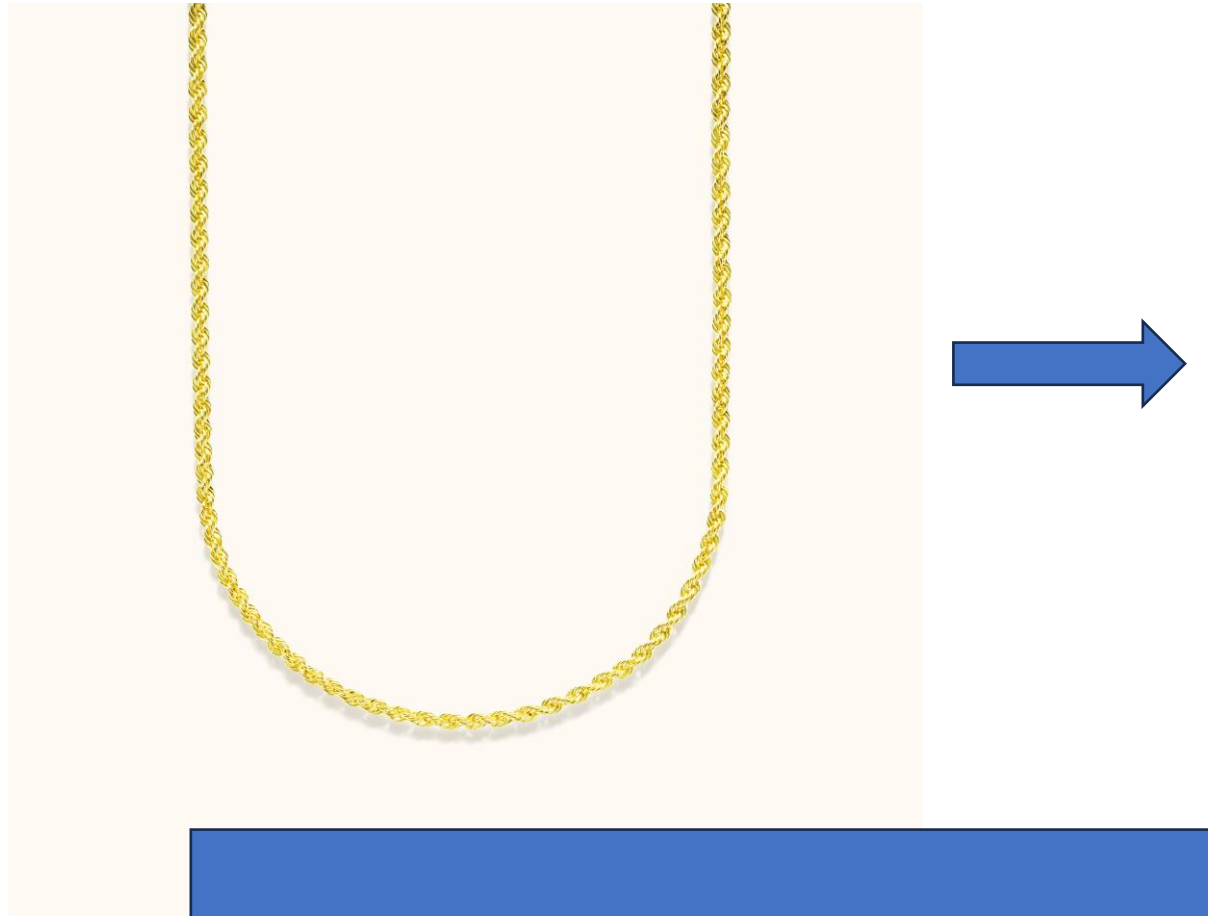
Color is OK. Please position all the necklaces at the same place.

WEB (370)



Color is OK. There is a defect on one of the chain. I marked it red. Please fix it

WEB (372)



That should be the reference color. Please position all the necklaces at the same place.



WEB (375)



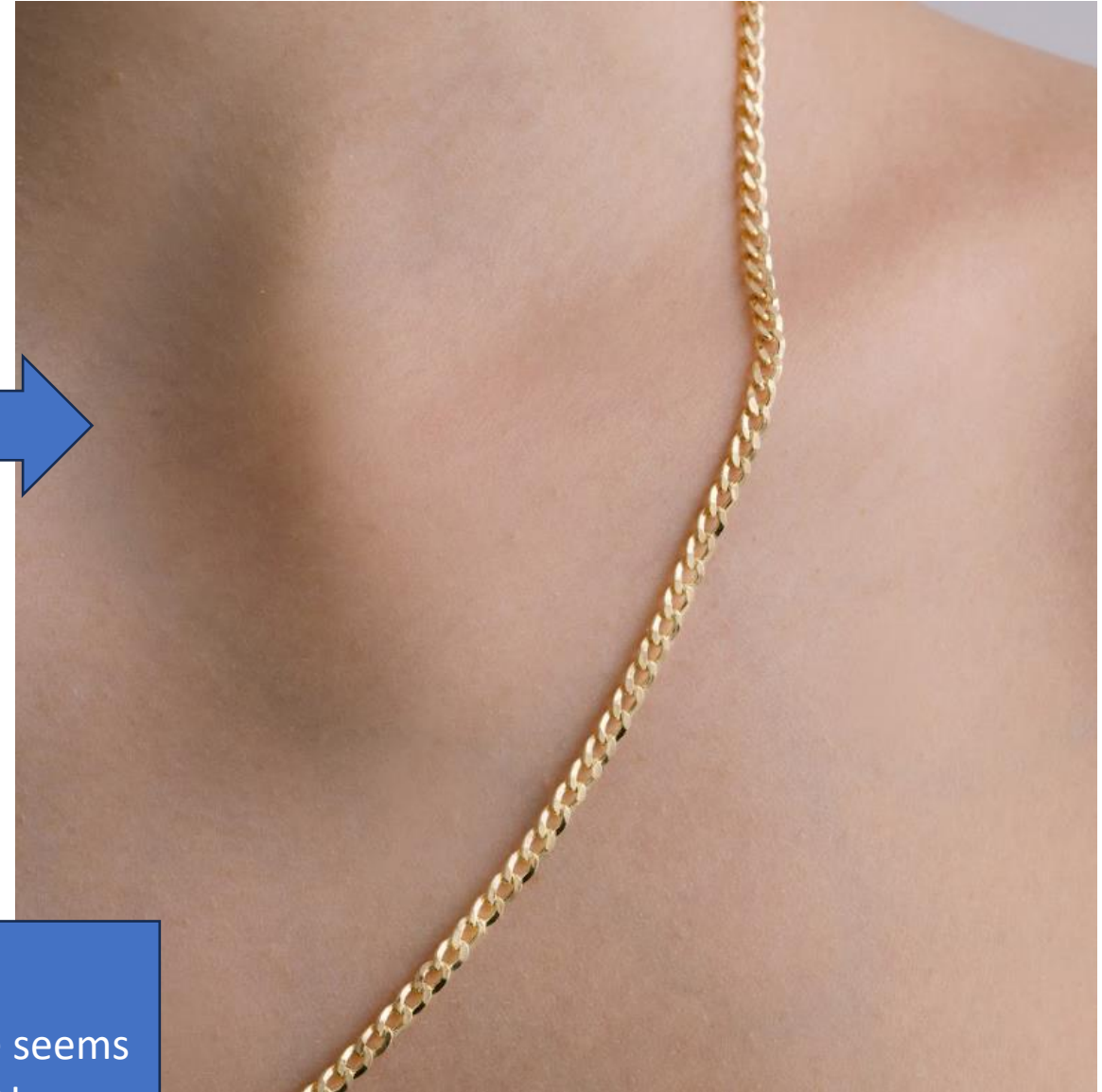
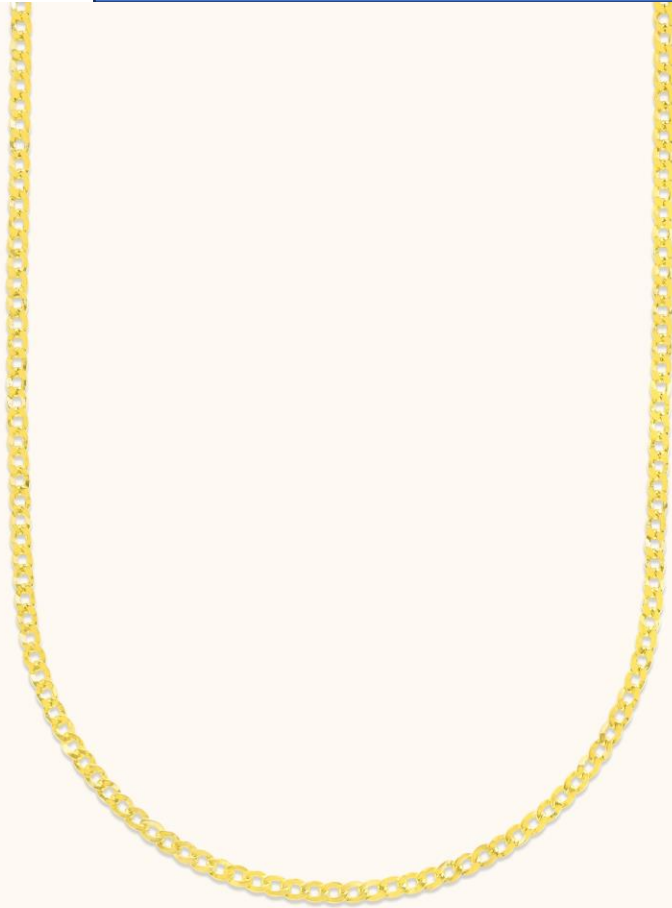
OK. Please just position the chain at the center and the distance to left and to right edge should be equal

WEB (377)



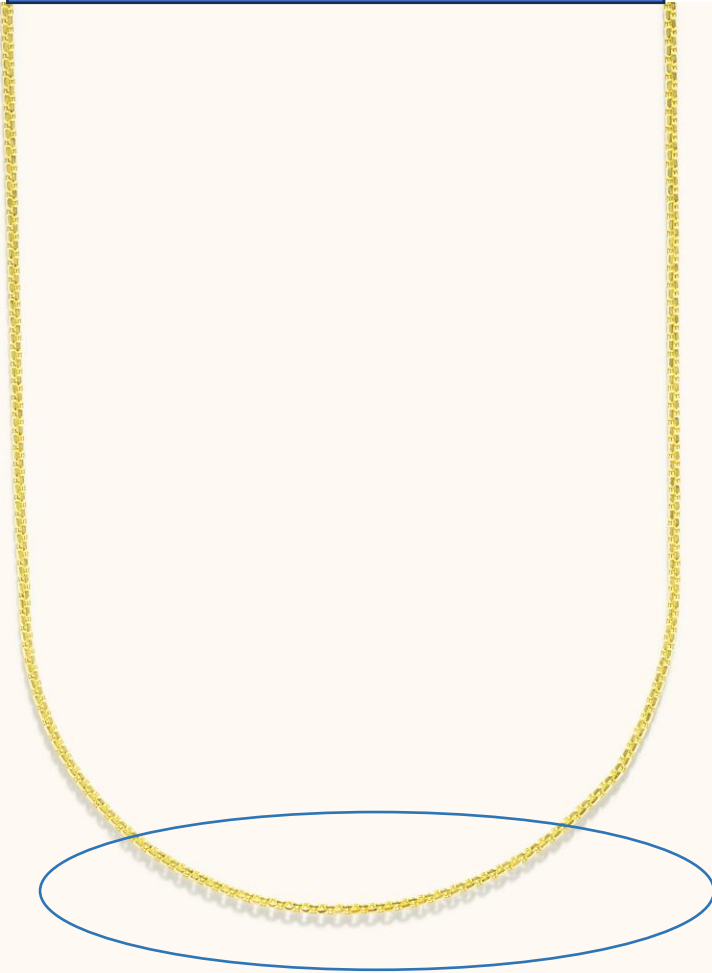
Shadow and the dark spots are very dominant. Please reduce them. There are scratches on the chain. Especially on the dark areas. Please clean them

WEB (382)



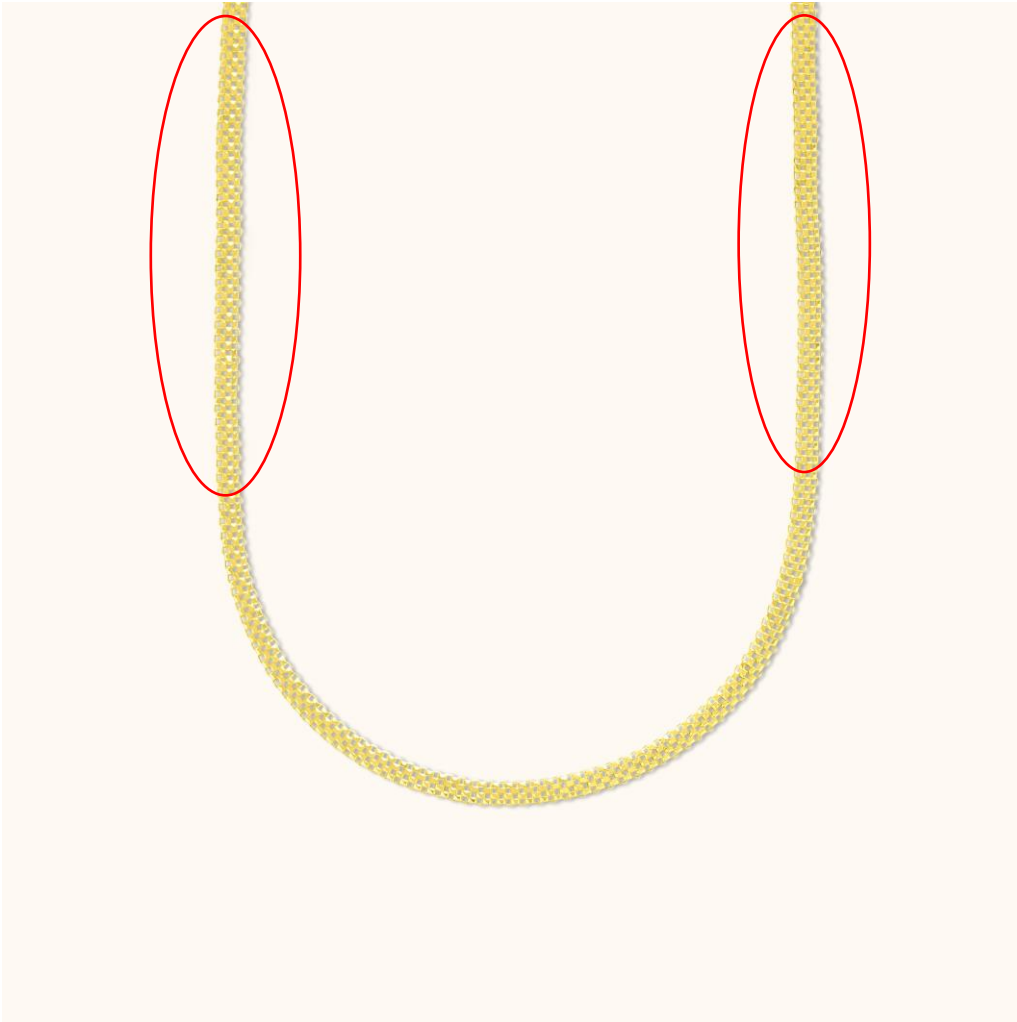
That should be the reference color. Retouched image seems a little bit artificial and it shouldn't be very bright.

WEB (383)



Color is OK. At the bottom part, shadow of the chain seems very dominant.(I marked it blue) Please reduce the shadow. The position of the chain looks crooked. Please position it at the center and the distance to left and to right edge should be equal.

WEB (384)



Color is OK. But the proportion of the left and right part of the chain doesn't seem ok. Please fix it, I marked the parts in red circles. These parts does not seem straight and please position all the necklaces at the same place.